



WWW.GWB-GROUP.COM

UNDERWATER TREADMILL

SX-2000



GREEN WORLD BRIDGE

Focusing on providing medical, physiotherapy, sport, and ergonomic products, aims to enhance the quality of life for individuals.

As a key supplier in this industry, we are committed to delivering products that not only meet high-quality standards but also contribute to the health and well-being of our customers.

Green World Bridge Your trusted partner in achieving a healthier, more fulfilling life.

START SLIDE

ABOUT SX-2000

The SX-2000 is a cutting-edge chamber treadmill that seamlessly integrates advanced treadmill technology with the physical benefits of water-based movement.

The new underwater treadmills are a practical and beautiful example of modern innovation in the physiotherapy, medical, and sports equipment industry, specifically designed to provide a unique and comfortable experience for users when using the treadmill.

These treadmills offer access to a fully VIP aquatic environment. They can be controlled by an app installed on your phone or tablet, allowing your doctor, physiotherapist, or trainer to monitor your progress. which can lead to significant improvements in therapeutic processes and exercise routines. Due to their small footprint and versatile, multifunctional applications, these treadmills can be used in physiotherapy clinics, various sports clubs, fitness centers, and even personally at home. These features make them an excellent choice for professional athletes, patients undergoing rehabilitation, and fitness enthusiasts.



speed 12 km/h

Net weight 400 Kgr

Adjust the water temperature to 34° C

The maximum water intake height is 125 cm

Dimension 240*120*170 cm

WHY WATER ?

Water possesses unique properties that provide significant benefits for rehabilitation, medical, and physical therapy, promoting vitality, improvement, and recovery. Let's explore these properties and their specific benefits :

properties and Benefits of Water :

Hydrostatic pressure :

(This pressure is caused by liquids to balance due to gravity and is added to the water depth)

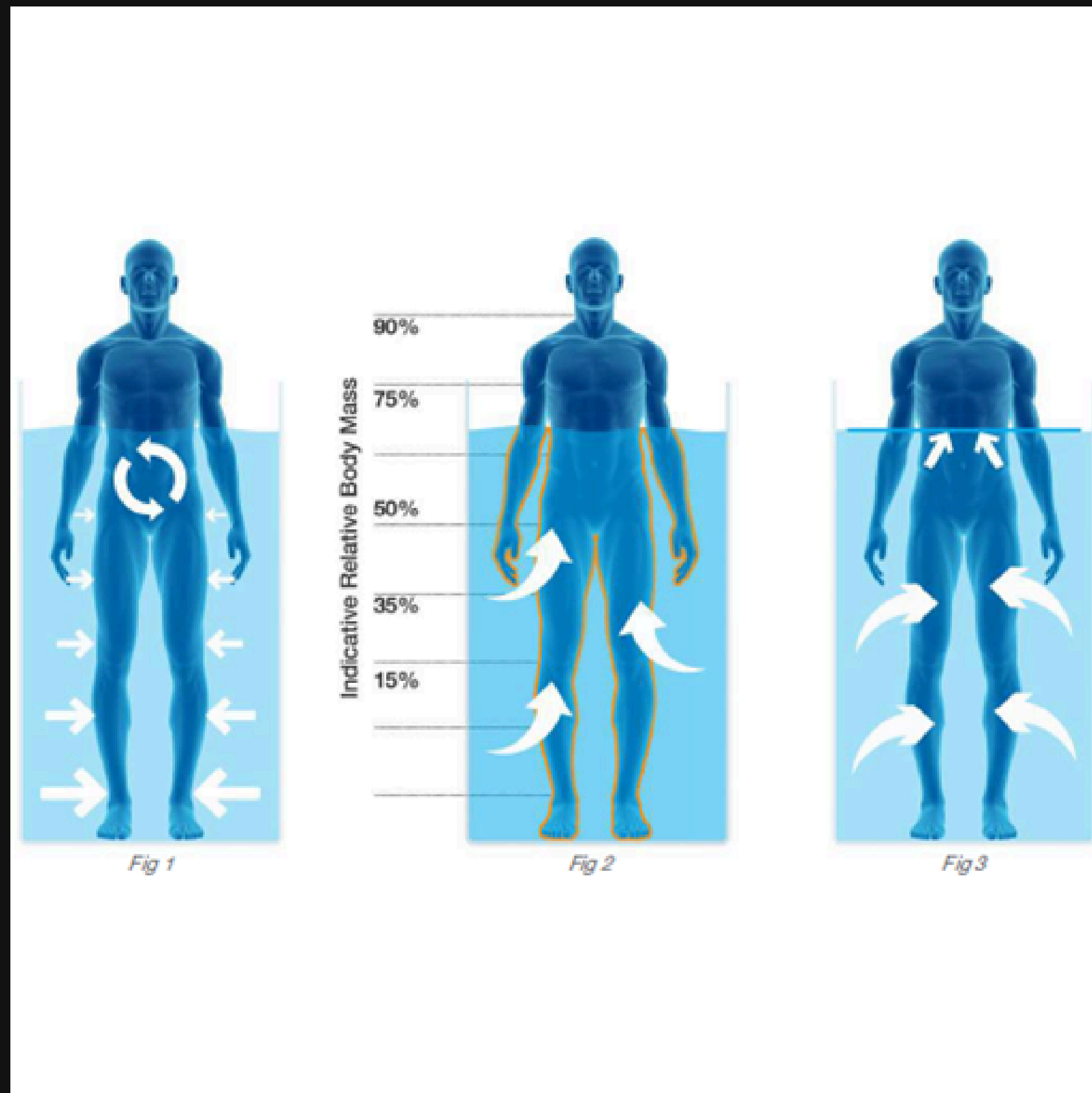
Help to increase blood circulation and reduce heart rate and arterial pressure

- Reduction of peripheral edema
- Increased metabolism and calorie burning
- Improves cardiovascular conditioning by increasing pressure on the chest (Fig 1)

buoyancy :

(Depending on the height of the water there are different advantages)

- Reduce painful joint and muscle pressure
- Improved flexibility
- Increase body stability (Fig 2)



WHY WATER ?

Temperature :

(Variable water temperatures can have significant effects on the body)

- Calms the user
- Relieves pain
- Improves blood circulation (Fig 2)

Surface tension :

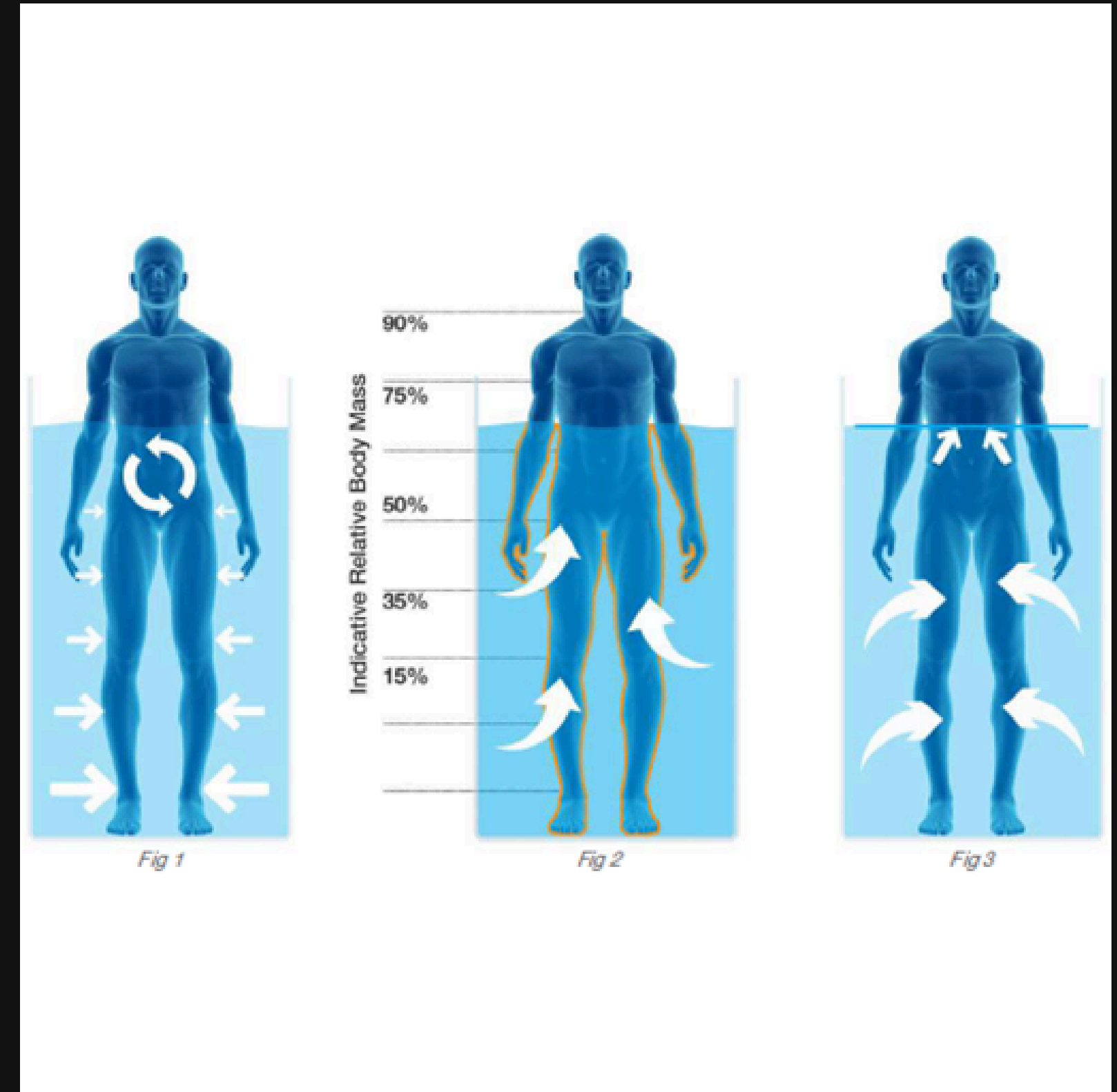
(Area users break water level with their body)

- Targets specific muscle groups
- Enhances balance for specific patients (Fig 3)

Water resistance :

(Water resistance to submerged areas)

- Protects weak muscles and organs
- Increases the intensity of exercises (Fig 3)





BENEFITS OF SX-2000

Ankle Injuries

01

underwater treadmill users experience a 60% reduction in body weight, which is very useful for rehabilitation and healing of injured limbs such as the ankle.

Knee and lower leg injuries

02

Knee replacements ,ACL reconstruction and lower leg trauma can all be aided by the benefits of an aquatic treadmill rehabilitation programme

Nervous system

03

Stroke patients and people with other neurodegenerative diseases can re-learn in the aquatic environment

Thigh joint replacement

04

Elderly patients after rehabilitation of thigh joints can undergo rehabilitation to manage pain and rehabilitation by walking in hot water inside these treadmills.



BENEFITS OF SX-2000

05

Weight loss

Aquatic Training Facilities:
Low-impact yet highly effective workouts offered by aquatic training facilities contribute to improved health and overall fitness.

06

Spinal cord injuries

The low speed on the treadmill allows patients to take the first steps to healing the affected areas in a fully controlled aquatic environment

07

Cardiovascular, Respiratory

Exercise in the water can improve cardiovascular strength, and water resistance and pressure as key elements along with the correct water temperature can be effective in fitness and muscle building and increase cardiovascular efficiency.



GYM

■ Muscle building and weight loss

Due to the resistance of water to inertia, it puts a lot of pressure on the lower muscles to walk and run, which causes four times more muscle and calorie burns than the non-water condition. The height of the water should be set below the knee .

■ Rehabilitation of spinal cord injuries

Surface tension in these treadmills helps maintain balance while walking and enhances confidence in walking to improve spinal cord injury .

■ Muscle Rehabilitation Using Weight Loss

When the body is immersed in water, it reduces the amount of weight that can be reduced by up to 125 centimeters in the treadmill, by up to 70 percent of the body weight, which reduces muscle weakness .

■ Apply temperature changes

Due to the possibility of temperature changes in these types of treadmills in the interval 0-34° C, depending on the type of illness and temperature damage required, can be created in the aquatic environment used .



VERSATILE APPLICATIONS OF OUR UNDERWATER TREADMILLS

Our underwater treadmills provide versatile solutions for diverse industries, enhancing fitness with low-impact, highly effective programs. They support athlete rehabilitation, promote active aging in retirement communities, and offer unique options at health spas, with endless applications for every client and patient.

- Rehabilitation Clinics
- Gymsnasiums
- Football Federations
- Health Spas
- Fitness Hubs
- Rugby Associations
- Aquatic Therapy
- Wellness Centers
- Caring For Pregnancy (pre and postnatal health)





DIMENSIONS

Overall Dimensions : 210 x 95 x 200 cm

Max Speed : Up to 12 km/h

Internal Dimensions : 140 x 145 x 77 cm

Adjustable Water Temperature : Up to 37°C

Net Weight : 400 kg

Touch Screen : 10 inches

Material : Stainless Steel, Fiberglass, ABS

Folding Chair

Purification System : Ozone Generator

8 Turbo Jets

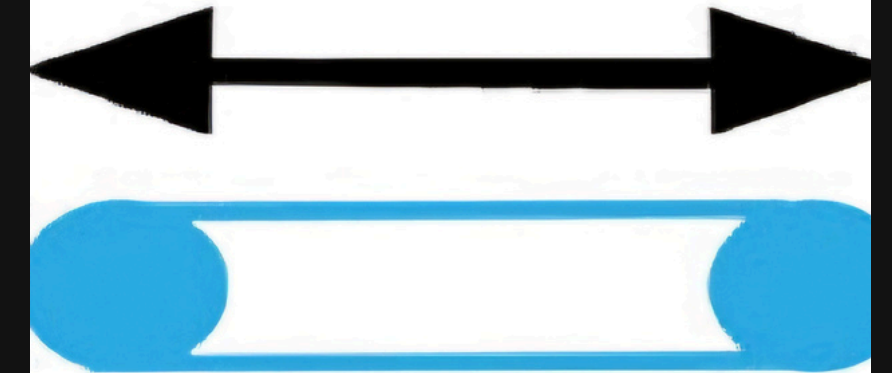


FEATURES

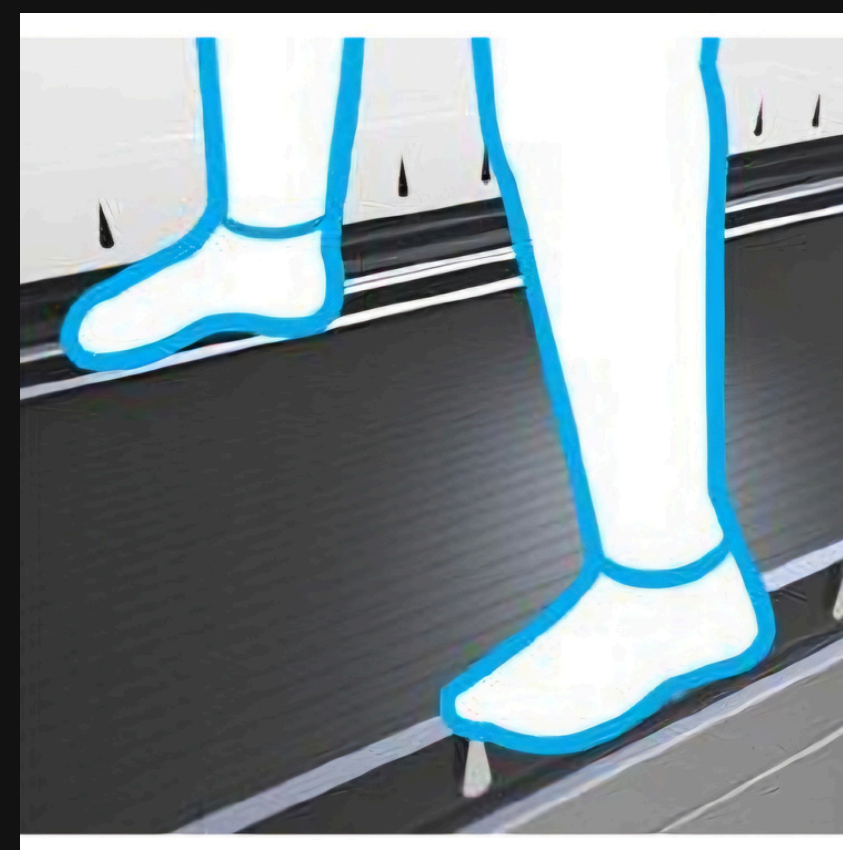
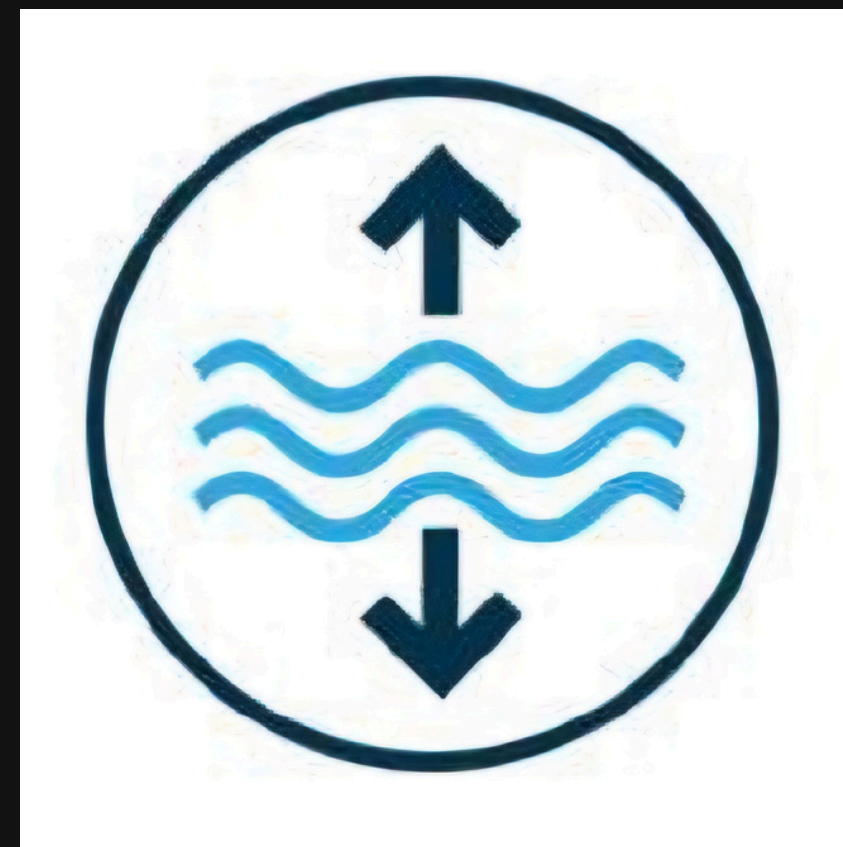
- Stainless Steel Walk-Through Design with Entry Door
- Easy Operation, One-Stage Safety Door Latch
- Structural Glass with All-Round Patient Visibility
- Side Platforms for Therapist
- Fully Automatic Water Filling and Emptying Valves
- Isolation Transformer
- Adjustable Speed Controls
- Turbo Jet Nozzles for Slimming System
- Control from Portable Devices
- Remote Service Diagnostics



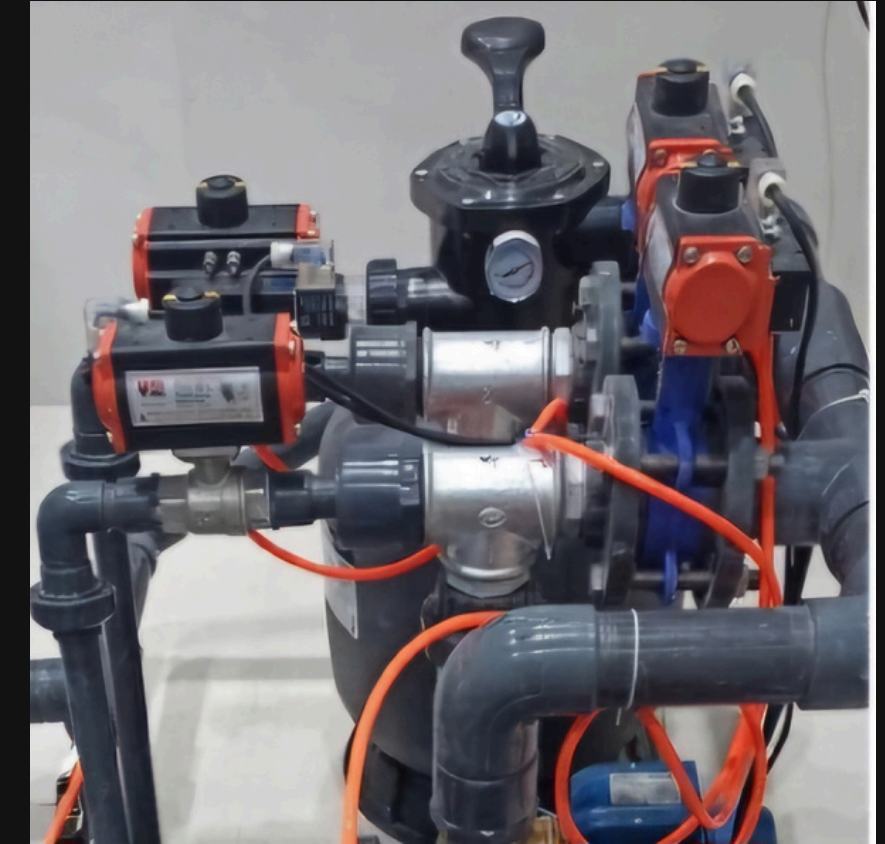
- Electrical
Powered by DELTA with a 24-month warranty on drive and controls.
- Water Treatment
Automatic chemical water treatment system with ozone generator. The water dump valve prevents fouled water from returning to the water tank.
- Turbo Jets
For hydro massage and creating more resistance during water activities.
- Reversible Belt
This feature provides a wider variety of therapy options.



- **Transfer Pumps**
High-capacity transfer pumps with rapid filling and emptying times, enabling you to accommodate more patients.
- **Touch Screen Console**
Adjustable controls positioning for added convenience.
- **Therapist Side Platforms**
Allow the clinician to accompany a patient on the treadmill in comfort and safety.
- **Pre-set Control Options**
Intuitive controls for water, speed, and incline with time and distance settings.



- Easy Operation Door Handle**
Easy operation, two-stage door latch for safety.
- User friendly app**
Remote operation using an app available for iOS or Android devices.
- Fully Automatic Intelligent Control System**
The treadmill is completely intelligent and performs all commands automatically.
- Safety Key**
Its purpose is to provide an emergency stop feature for the user, as the treadmill immediately stops when the key is removed from its place.





CERTIFICATE



THE ISO 13485 STANDARD IS RECOGNIZED AS A COMPREHENSIVE FRAMEWORK FOR QUALITY MANAGEMENT SYSTEMS IN THE MEDICAL DEVICE INDUSTRY. THIS STANDARD FOCUSES ON QUALITY CONTROL AT ALL STAGES OF PRODUCTION, FROM DESIGN AND DEVELOPMENT TO MANUFACTURING AND DISTRIBUTION. BY USING PRODUCTS MANUFACTURED UNDER THIS STANDARD, SUCH AS THE FERIA SX2000, CUSTOMERS CAN BE ASSURED OF THE HIGH QUALITY OF THE PRODUCTS AND THEIR COMPLIANCE WITH LEGAL AND REGULATORY REQUIREMENTS, LEADING TO INCREASED TRUST AND CONFIDENCE IN USING MEDICAL DEVICES.

THE IEC 60601 STANDARD IS ONE OF THE MOST IMPORTANT INTERNATIONAL STANDARDS FOR MEDICAL ELECTRONIC EQUIPMENT, ENSURING THE SAFETY AND PROPER PERFORMANCE OF THESE DEVICES. THIS STANDARD SETS STRINGENT REQUIREMENTS FOR PROTECTING PATIENTS AND USERS AGAINST ELECTRICAL, MECHANICAL, THERMAL, AND RADIATION HAZARDS. BY USING PRODUCTS MANUFACTURED UNDER THIS STANDARD, SUCH AS THE FERIA SX2000, CUSTOMERS CAN BE ASSURED OF THEIR SAFETY, RELIABILITY, AND HIGH QUALITY, ALLOWING THEM TO USE THESE DEVICES WITH PEACE OF MIND.

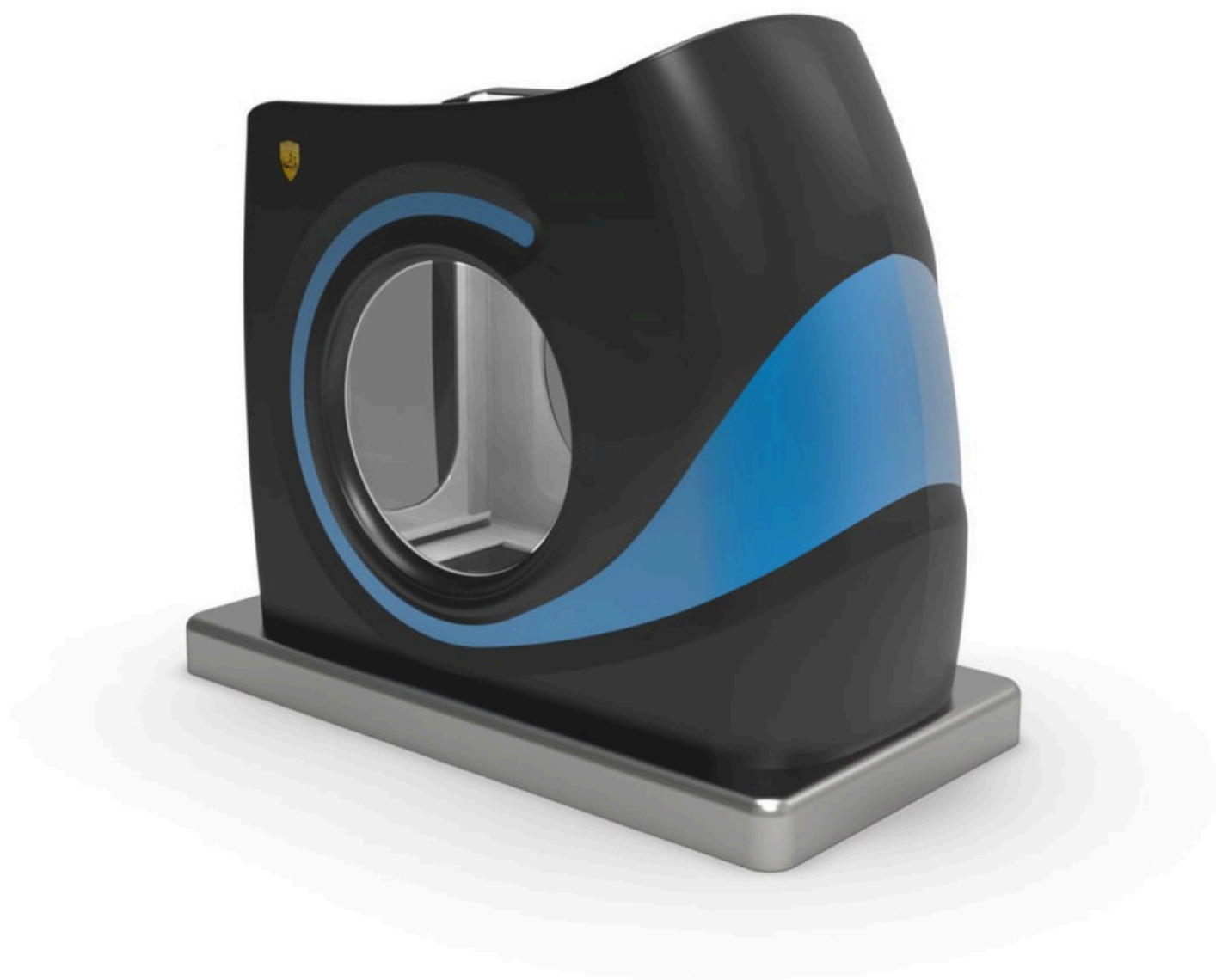




"WE ARE PROUD TO SAY THAT THE SX-2000 HAS BEEN CHOSEN AND TRUSTED BY LEADING CLINICS, SPORTS CLUBS, AND FITNESS CENTERS AROUND THE WORLD:"

- Sports medicine Ifmark clinic at **IRAN MALL** (the largest shopping center in the world)
- Major football clubs Gol Gohar F.C
- Major football clube SANAT MES KERMAN F.C
- In 25 professional bodybuilding gyms
- In over 20 X-body clinics
- in 20 Physiotherapy and rehabilitation clinics
- And over 50 for personal use at home





These properties make water-based therapy, SX-2000, a valuable tool for rehabilitation and physical fitness. This unique environment provides support for the body, resistance for muscle strengthening, and thermal benefits for pain relief and relaxation, all of which contribute to improved recovery and overall fitness .


2000+
USERS



**GREEN WORLD
BRIDGE**

CONTACT US

We value your interest in our products and services. Whether you have questions, need assistance, or would like to learn more, our dedicated team is here to help. Please don't hesitate to reach out. Your satisfaction is our priority, and we look forward to connecting with you soon.

 +98-998-190-1510

 WWW.GWB-GROUP.COM

 EMAIL : EXPORT@GWB-GROUP.COM

 ADDRESS : NO,190, NABIYAN STREET, TEHRAN, IRAN



WWW.GWB-GROUP.COM



THANK YOU